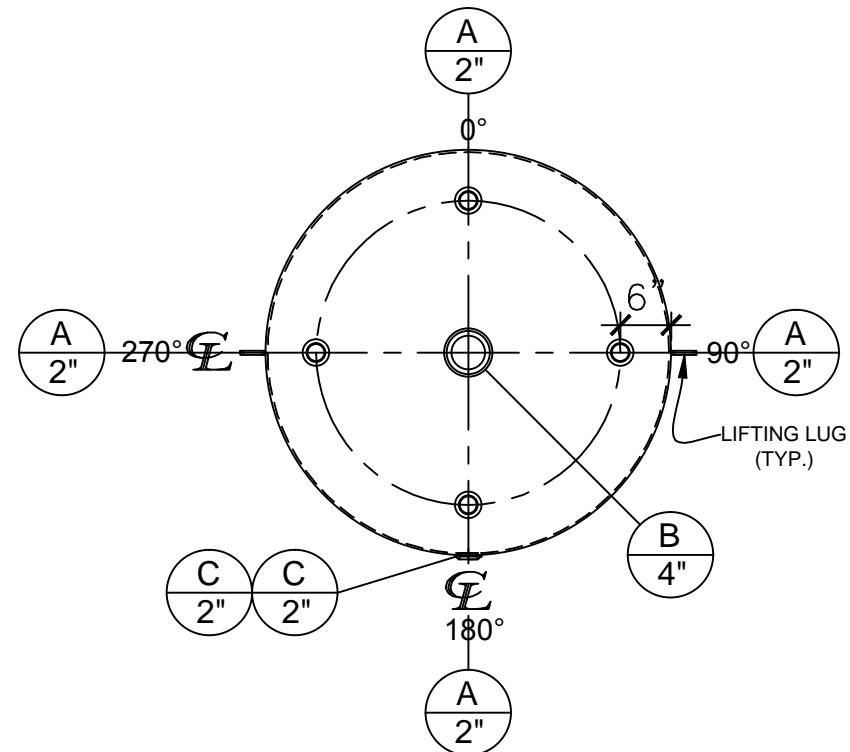


FRONT VIEW



PLAN VIEW

NOZZLE SCHEDULE

ITEM	SIZE	RATING	TYPE	MATL	PROJ. IN	PROJ. OUT	REMARKS	NOTES
A	2"	N.P.T.	CPL.	C.S.	STD.	STD.	-	-
B	4"	N.P.T.	CPL.	C.S.	STD.	STD.	-	EMERGENCY VENT OPENING
C	2"	N.P.T.	W.F.	C.S.	STD.	STD.	-	-

NOTES:

- A. Quantity: One
- B. Material: H.R. Carbon Steel.
- C. Design Pressure: Atmospheric.
- D. Design Temperature: Ambient.
- E. Built & labeled per U.L. spec. #142.
- F. Exterior: one coat gray primer.
- G. All fittings to be protected for shipment.
- H. Customer to verify nozzle sizes, locations and quantities.

FOR APPROVAL

APPROVAL FOR CONSTRUCTION
PLEASE SIGN AND RETURN:

- APPROVED AS DRAWN.
- APPROVED WITH NOTED CHANGES, CONSTRUCTION WILL BE SCHEDULED WHEN SIGNED DRAWING AND CONFIRMED ORDER ARE RECEIVED.

SIGNATURE: _____
DATE: _____

SALES ORDER#



Phone: 870-735-4473 Fax: 870-735-3982

VESSEL DESCRIPTION:

550 Gallon 48" I.D. x 6'-0" Shell Height Single Wall Vertical Tank

CUSTOMER:

P.O.#

DATE:

SCALE:

DWG.#

NB00550SWV04812G

DRAWN BY: TC

CHKD. BY: